



Document Solutions



**ECOSYS FS-C8520MFP /
ECOSYS FS-C8525MFP**

Color Multifunctionals for A3 Format

**ECOSYS FS-6525MFP /
ECOSYS FS-6530MFP**

Monochrome Multifunctionals for A3 Format



Color MFP

ECOSYS FS-C8520MFP /
ECOSYS FS-C8525MFP

Monochrome MFP

ECOSYS FS-6525MFP /
ECOSYS FS-6530MFP

New Design, New Definition

Low-Cost, Professional Document Output in your Compact Office



- Easy to OWN
- Easy to USE
- Easy to CONTROL
- Easy to SERVICE
- Easy on the ENVIRONMENT



Powered by **HYPAS™**



Born to be Extraordinary

KYOCERA Document Solutions is Extraordinary for

- Broad Range of Multifunctional Devices and Printers
- Optimized Total Cost of Ownership (TCO)
- Reliable with Long Life Drum and Parts
- New and Advanced Technology

KYOCERA Document Solutions strives to be a company that contributes to the society and demonstrates “Customer First” principle by providing customers with maximum value to increase their satisfaction. By adhering to the mission of producing document management devices that take balance between “Economy” and “Ecology”, KYOCERA Document Solutions succeeds to develop document management devices with advanced technologies which help customers to optimize office productivity and efficiency at a low total cost of ownership and, at the same time, improving environmental performance.

A SMART MFP Designed for Today’s Business

Designed for dynamic workgroups with the highest demand in productivity, these state-of-the-art MFPs have extremely short first print time and high speed. Each equipped with a USB port, a scanner, a duplex unit and a job separator as standard, these machines inherit KYOCERA’s fine traditio of ultra-high reliability with KYOCERA’s technologies and proprietary long life drums, coupled with best-in-class preventive maintenance (PM) schedules set at a minimum of **200,000 Sheets**. These elements lead to minimal services and extensive machine uptime.

Innovation Made Simple Built by KYOCERA Inspired by You

- EASY installation, EASY setup and EASY operation
- Low total cost of ownership in its class
- Print/ Copy speed: up to A4 30 sheets per minute
- Professional print, copy, color scan and fax (optional) functions
- Up to 1,600 sheets paper capacity*, and the ability to process paper weight up to 256 g/m²
- Recommended number of users from 10 to 20
- User-friendly color touch panel with wizard-style navigation
- 360° all-rounded design and low noise emission
- Long life drum and replacement parts providing highest efficiency and reliability
- Flexible service plans meeting different customer needs
- Reversible document processor and job separator as standard
- Specifically designed for small and medium-sized enterprises, ideal for any size of corporations, workgroups and departmental sharing

Additional efficiency & cost saving

Reverse automatic document processing*

Give your document the right finish

500 sheets staple finisher



Easy to use for everyone

Color touch panel with wizard-type navigation

Fast & secure printing

USB port for direct printing

Easy to replace

Toner and waste toner box

Multitalented versatility

500 sheet cassette with 2 paper feeders
Intelligent paper sensor to fit paper in different sizes



*Required optional Paper Feeder PF-471

**Image shown: ECOSYS FS-6525MFP / ECOSYS FS-6530MFP with Document Finisher DF-470, Attachment Kit AK-470 and Paper Feeder PF-471



Professional Functions for Modern Office

Print & Copy

Cost-Saving with Combine Printing and Copying

Combine up to 25-in-1 originals in one single page.



Duplex Printing and Copying

Saving up to 50% of paper!

Significantly reduce space for document storage and make archiving easy.



*Document Processor required

Offset Sort for Multiple Copies

Sorting becomes an easy task with offset outputting.

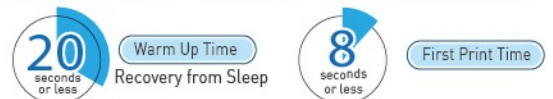


Quick Warm-up Time and First Print Time

ECOSYS FS-C8520MFP/ ECOSYS FS-C8525MFP



ECOSYS FS-6525MFP/ ECOSYS FS-6530MFP

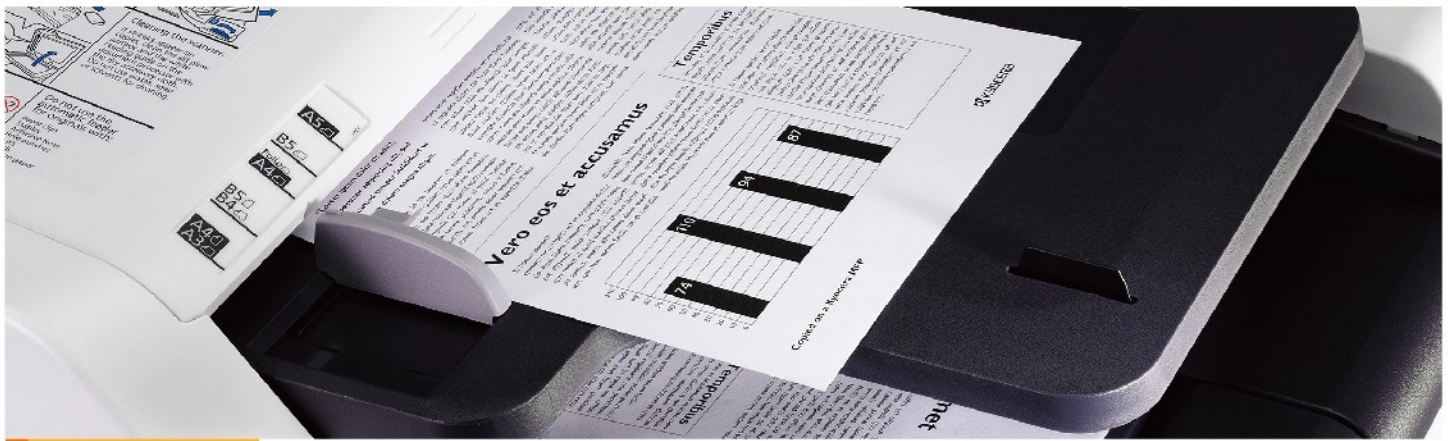


Efficient Document Functions with Multi-tasking

- Built-in Job Separator makes distribution of output document easy into different trays.



- Streamlined operation — Multi-tasking can be performed simultaneously. This includes Print / Copy / Scan / Fax (Optional)



Scan & Fax

Scan

Highest Scan Resolution	Max. 600dpi
Highest Scan Speed	Max. 40 ipm

- True Multi-tasking enables simultaneous scanning and printing
- With the advanced PDF compressor, scanned images can be compressed with different qualities in different sizes.



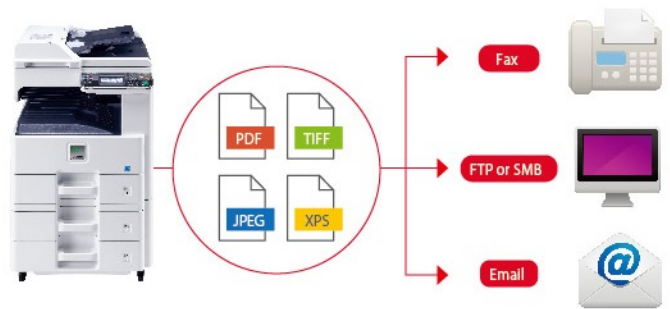
	No. of broadcast items
Email	Up to 100
Folders (SMB, FTP)	Up to 5 Folders (SMB/FTP)
*FAX	Up to 100

*Requires the optional fax kit.

• FTP/SMB/Email/Fax Multi-Sending

Capable of scanning once and sending document to different destinations (email addresses, folders, etc.).

Maximum 200 addresses and 20 program addresses can be stored for scan destinations. LDAP query is also possible.



Fax (Optional)

Fax Forwarding

- Simply forward any incoming fax to another fax machine or other destinations by email, SMB or FTP.



- Capable of processing A3-sized document.

Network Fax

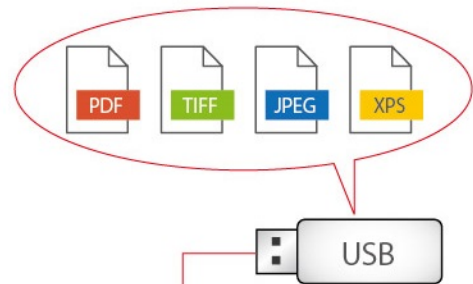
Significantly reduce cost!

The Network Fax function enables sending and receiving faxes, even through overseas transmission, with the Super G3 Fax technology by PC.
*Network connection required.



Document Box

Scan to/Print from USB Memory in PDF, TIFF, JPEG or XPS format. Files are processed directly from the control panel of Smart MFP. No PC is required.



Security Features to Stand Guard over Your Document, Information and Data



Security Enhancement

- **SSL Data Security Protocol**

With the use of Secure Socket Layer (SSL), it enhances secure communication for remote configuration and data retrieval which prevent eavesdropping and tampering.



- **Card Authentication* (Optional)**

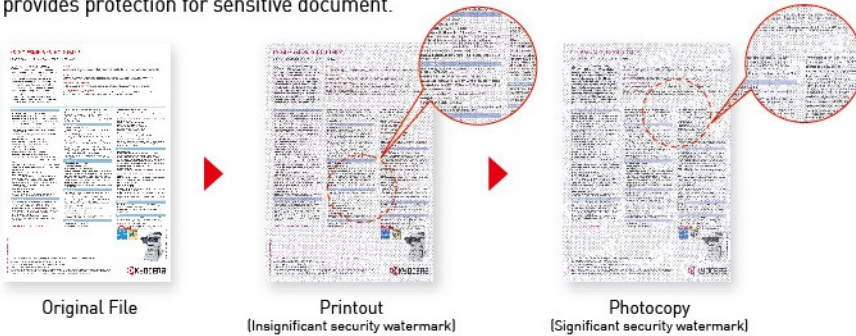
User can use Card Authentication to allow quick and secure access with predefined user restrictions such as color output restrictions.



*Optional card reader accessory is required.

- **Security Watermark**

The Smart MFP can affix insignificant security watermark on printouts while it significantly reveals after photocopy. This helps distinguishing originals from their photocopies and provides protection for sensitive document.



- **Private Print (Standard)**

User can select Private Print to retain the print job at the device and only collect the print job by entering designated password on the operation panel.

Smart Design to Deliver Top Quality and Efficiency

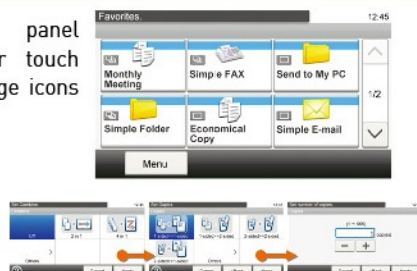
- Reduces paper jam and paper curl with enhanced paper path
- Allows quick and easy removal of paper jam by simply opening the covers, in the rare occasion of a paper jam
- Prevents paper wrinkling or image skewing with an internal paper stack adjuster in the cassette
- Ensures superior image quality with a closed and therefore dust-free image scanning unit
- Prevents paper curling and provides better fusing capability with the built-in dehumidifying heater
- Enables quick and easy replacement of drum, developer unit and other maintenance parts without any special tools



User-Friendly Control Panel

Multi-function Control Panel

- Easy-to-use operation panel equipped with a color touch screen that displays large icons with animated menu.



- Clear indication of job status and output status with Job Separator LED and Device Status LED



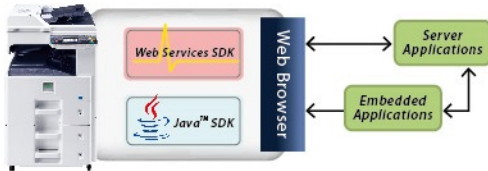


Streamline Your Workflow with HyPAS™ Applications

Transform your KYOCERA MFP with HyPAS™ Enabled or Customized Applications that Turns Your Otherwise Complex Workflows into Simple Processes

HyPAS™

Hybrid Platform for Advanced Solutions



KYOCERA's HyPAS™ (Hybrid Platform for Advanced Solutions), a powerful and scalable software solution platform, optimizes the performance of KYOCERA's award-winning MFPs through custom, integrated software applications that are designed to meet and exceed users specific document imaging needs. KYOCERA's HyPAS™ is unique in that it offers both Java-based and Web Services-based Software Development Kits (SDKs), providing a more open and flexible platform; enabling advanced integration with systems that are already implemented in the enterprise.

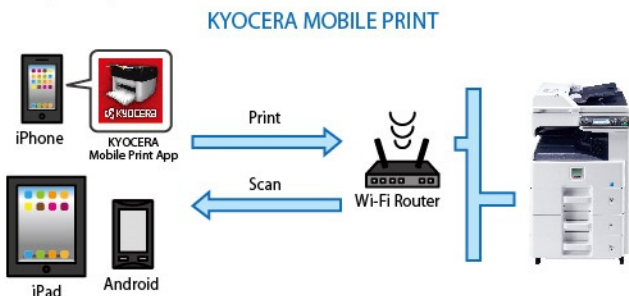
KYOCERA's HyPAS™ platform provides a wealth of benefits, including:

- End-Users benefit from simplified and faster operations, resulting in improved productivity and efficiency.
- Business Managers and CFOs profit from lower operating costs and maximum ROI, thanks to more fully optimized document imaging devices and improved MFP workflows.
- The IT Department takes advantage of the seamless integration of KYOCERA MFPs with existing solutions, maintaining the integrity and security of the user's documents and the document imaging device itself.

Mobile Print and Cloud Connect Powered by HyPAS™

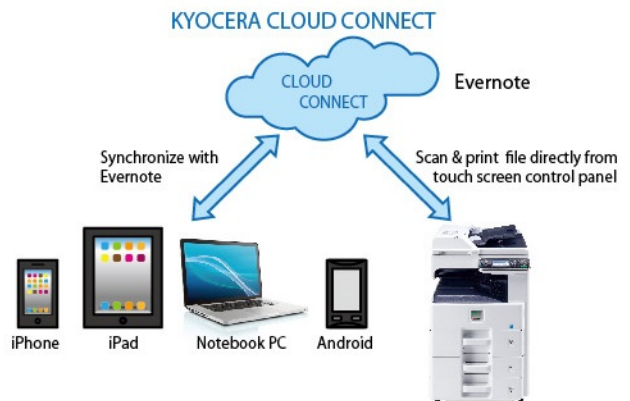
KYOCERA Mobile Print

KYOCERA Mobile Print enables users to print and scan using their smartphones and tablets with KYOCERA's printers and MFPs. KYOCERA Mobile Print quickly and easily discover KYOCERA Printers and MFPs via Wi-Fi. Print photos, documents or web pages stored on mobile devices from any file format including PDF, JPEG, TXT and HTML.



KYOCERA Cloud Connect

The KYOCERA Cloud Connect application allows users to upload and store files to their account on Evernote directly from the touch screen control panel of a HyPAS-enabled KYOCERA multifunctional product (MFP). And when a hardcopy of any document is needed, users can print directly from Evernote.





Easy Control & Management at Your Fingertips

Personalization of settings, shortcut keys (Favorites) and language selection are available on user profiles



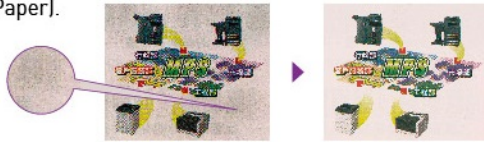
Network Authentication

A user can access and manage information through network authentication for Windows Server using Kerberos or NTLM.

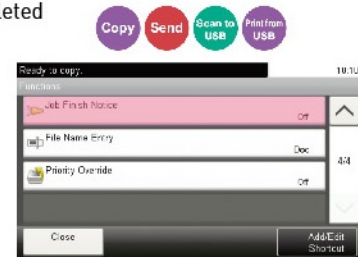


Unique Salient Features

- The Auto Color Selection function enables cost-saving for color document printing (only for ECOSYS FS-C8520MFP and ECOSYS FS-C8525MFP).
- The Prevent Bleed-Through function provides superior background reduction when copying or scanning double-sized paper (e.g. newspaper, NCR Paper).

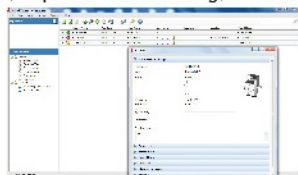


- The Job Finish Notice function sends email notification when a job is completed



KYOCERA Net Viewer - a Single Solution for Device Management and Reporting for IT Administrator

Comprehensive, well-designed and user-friendly! It offers a wide range of functions, including counter reading, status checking, device configuration, print accounting, alert configuration, etc. All functions can be accessed from one administration point.



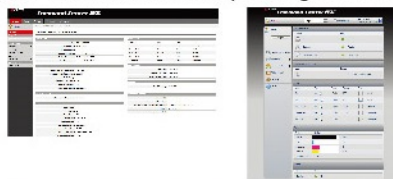
Convenient and time-saving!

KYOCERA Net Viewer enables the administrator to access the management functions on the network remotely from his PC. Features include

- Collecting meter count data easily
- Understanding print, copy, scan and fax volumes and costs
- Optimizing allocation of machines through analyzing the data of print/copy volumes, paper sizes that are most commonly used
- Granting permission and volume usage authorization to users

Web Based KYOCERA Command Center RX

By using a web browser, the administrator can access the built-in KYOCERA Command Center RX and check the operating status of the machine, as well as change settings related to security, network printing, email and advanced networking, etc.



IPv6 Ready

The Smart MFP supports IPv6, which makes it compatible with future network infrastructures.



Ease on Our Planet

- Reduce Wastage:
 - Long-life drum, developer and replacement parts

Drum Life	
ECOSYS FS-C8520MFP and ECOSYS FS-C8525MFP	200,000 prints
ECOSYS FS-6525MFP and ECOSYS FS-6530MFP	300,000 prints

- Save Power Consumption
 - Power consumption as low as **0.9 Watt** is achieved in sleep mode
 - White LED illumination



- Parts for Recycling
- Non-toxic materials
- Save Toner Consumption: Flexible EcoPrint Features

KYOCERA has been actively promoting the acquisition of various environmental labels, aiming to provide products that are safe and comfortable for our customers to use and have minimal environmental impact



Eco Mark (Japan)



EcoLeaf Environmental Label (Japan)



Law on Promoting Green Purchasing (Japan)



	Color Series		Monochrome Series	
Model Name	ECOSYS FS-C8520MFP	ECOSYS FS-C8525MFP	ECOSYS FS-6525MFP	ECOSYS FS-6530MFP
Main Specifications				
Writing Method	Semiconductor laser			
CPU	PowerPC464 800MHz			
Print Speed (A4/Letter)	Simplex 20/20 ppm (Color/Mono)	25/25 ppm (Color/Mono)	25 ppm	30 ppm
	Duplex 16/16 ppm (Color/Mono)	20/20 ppm (Color/Mono)	25 ppm	28 ppm
First Print Time	11.0 sec. or less in Mono 14.0 sec. or less in Color	10.0 sec. or less in Mono 12.0 sec. or less in Color	8.0 sec. or less	
Warm up time	Recovery from sleep 23 seconds or less		Recovery from sleep 20 seconds or less	
Resolution	600 dpi		Fast 1200/600 dpi	
Control Panel	4.3" Color Touch Panel			
PDL	PRESCRIBE			
Main Memory	1.5GB Standard (Max. 2.0GB)		1.0GB Standard (Max. 1.5GB)	
Interfaces	1000BASE-T /100BASE-TX/10-BASE-T, USB Host, USB 2.0			
Paper Weight	Standard Tray: 60 to 256 g/m ² ; MP Tray: 60 to 256g/m ²		Standard Tray: 60 to 163 g/m ² ; MP Tray: 45 to 256 g/m ²	
Paper Capacity	Standard	1 x 500 sheets + 100 sheets (MP Tray)		
	Maximum	1,600 sheets (With PF-471)		
Paper Size	Cassette: A3 to A5R ; MPT: A3 to A6R			
Media Types	Plain; Rough; Vellum; Recycled; Preprinted; Bond; Color; Pre-punched; Letter Head; Thick; High Quality; Custom 1-8 (MP Tray: Transparency; Labels; Cardstock; Envelop; Coated)		Plain; Rough; Vellum; Recycled; Preprinted; Bond; Color; Pre-punched; Letter Head; Thick; High Quality; Custom 1-8 (MP Tray: Transparency; Cardstock; Envelop)	
External Dimensions (W x D x H)	590mm x 590mm x 748mm		590mm x 590mm x 694mm	
Weight	80kg		52.2kg	
Toner Capacity	[K] 12,000 pages; [C/M/Y] 6,000 pages ISO19798		15,000 pages ISO19752	
PM Cycle	200,000		300,000	
Supported Protocol	TCP/IP (IPv4/IPv6); NetBEUI; LPD; RAW; SMTP; POP3; FTP; SMB; LDAP; SNMP (v1/v3); HTTP(S); IPP; IPP over SSL; WSD (Print/Scan)			
Printer Specifications (Standard)				
Supported OS (Driver & Software)	KX Driver, KX(XPS) Driver, PCL/KPDL/XPS Mini Driver, Status Monitor, KYOCERA NET Admin, KYOCERA NET Viewer, KYOCERA Net Direct Print; Windows XP, Server2003/2008, Vista, 7 KPrint: Windows XP, Server2003 Quick Setup: Windows XP, Vista, Server2003/2008 PPD Driver: MAC OS X Version 10.2 or higher			
Duplex Print Function	Standard			
Printing Emulations	PCL6(5e, XL), KPDL3(PostScript3 Equivalent), XPS			
Scan Specifications (Standard)				
Scan Mode	Color			
Resolution	600 dpi, 400 dpi, 300 dpi, 200 dpi, 200 x 100 dpi, 200 x 400 dpi			
File Format	PDF/JPEG/TIFF/XPS			
Continuous Scan Speed	Mono	40 ipm (300/200 dpi), 20 ipm (600/400 dpi)		40 ipm (300/200 dpi), 20 ipm (600/400 dpi)
Scan Speed	Color	40 ipm (300/200 dpi), 20 ipm (600/400 dpi)		20 ipm (300/200 dpi), 10 ipm (600/400 dpi)
Transmission Type	Scan to Email; Scan to FTP; Scan to SMB; WSD Scan; USB Memory			
Copy Specifications (Standard)				
Resolution	600 x 600 dpi			
Continuous Copy Speed (A4/ Letter)	Color / Mono: 20cpm		25cpm	30cpm
First Copy Speed	11.7 sec. or less in Mono 13.6 sec. or less in Color		7.8 sec or less	
Fax Specifications - Fax, Network Fax Function (Optional)				
Transmission Mode	Super G3			
Data Compression	MH/MR/MMR/JBIG			
One Touch Dial	100 entries			
Address Book	200 entries			
Modem Speed	33.6 kbps			
No. of line	Single			
Standard Option				
Document Processor	Paper Weight	Simplex 45-160 g/m ² ; Duplex 50-120 g/m ²		
	Feeder Capacity	50 sheets or less (50-80 g/m ²)		
	Paper Size	A3 (11" x 17")		
Duplex	Embedded			
Job Separator	Standard			
Consumables & Maintenance Kit				
Toner Cartridge	[K] TK-899 K, [Y/M/C] TK-899 Y/M/C		TK-479	
Maintenance Kit	MK-895 A, MK-895 B, MK-470		MK-479, MK-470	
Additional Options				
Finisher	DF-470 + AK-470 (Hanger type 500 sheets Staple Finisher) Paper Weight: 52-256 g/m ² ; Staple weight: Less than 90 g/m ² ; Staple Position (1 staple: front/rear, 2 staples: center)			
Paper Feeder (Cassette)	PF-470 (500 sheets) & PF-471 (500 sheets x 2)			
FAX Kit	FAX System (U)			
IC Card Reader Kit	Card Authentication Kit (B) / (B) AC			
Gigabit Ethernet	IB-50			
USB Keyboard	Optional			

KYOCERA Business Partner

*KYOCERA does not warrant that any specifications mentioned will be error-free. Specifications are subject to change without notice. Information is correct at time of going to press. All other brand and product names may be registered trademarks or trademarks of their respective holders and are hereby acknowledged.

@All rights reserved. Brochure/KDAS/201205/Smart MFP HyPAS

KYOCERA
Document Solutions