



Document Solutions

> PRINT > COPY > SCAN > FAX

TASKalfa 6501i
TASKalfa 8001i

MONOCHROME
MULTIFUNCTION PRODUCT
FOR A4/A3 FORMAT

TOUGH AND DYNAMIC A MARK OF TOP PRODUCTIVITY



- A4 copy/print speed up to 80 cpm.
- Build-in top class high speed dual color scanning system with speed up to 180/100 ipm A4 Mono/Color.
- Fast warm up time in just 30 seconds and first copy time at 5.2 seconds or less.
- Standard 160GB hard disk capacity and 3GB RAM to meet heavy duty task requirements.
- Standard 4,150 sheets paper handling capacity and is expandable to maximum 7,650 sheets.
- Support various media type and capacity with standard paper weight from 60g/m² up to 300g/m² media capacity*.
- Support Banner Print.

* Only applies to Multi-Purpose Tray (MPT).





Born to be Extraordinary

KYOCERA Document Solutions is Extraordinary for

- Broad Range of Multifunction Devices and Printers
- Optimized Total Cost of Ownership (TCO)
- Reliable with Long Life Drum and Parts
- New and Advanced Technology

KYOCERA Document Solutions strives to be a Company that contributes to the society and demonstrates “Customer First” principle by providing customers with maximum value to increase their satisfaction. By adhering to the mission of producing document management devices that take balance between “Economy” and “Ecology”, KYOCERA Document Solutions succeeds to develop document management devices with advanced technologies which help customers to optimize office productivity and efficiency at a low total cost of ownership and, at the same time, improving environmental performance.

The Brand-New Flagship Models that enable Document Workflow and Communications at Ease

The innate values of KYOCERA high speed A3 monochrome MFPs – high productivity and reliability – have been intensified in these latest flagship models.

By combining high-speed scanning, user-centric functionalities with high paper capacities into one high-speed monochrome multifunction device, the new TASKalfa 6501i and TASKalfa 8001i are renowned for consistent output image and exceptional productivity in high coverage printing, heavy media printing and booklet printing.

Support versatile imaging and advanced finishing, integrated and optional business applications, the capabilities of the devices can be elevated to achieve productivity gains. It optimizes your business document workflow yet significantly reduces your document and management related costs which are perfect for any high-volume environment, such as large corporations, government offices, print shops and universities.



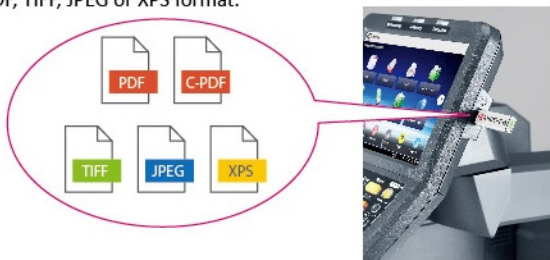
User-Centric COPY/PRINT/SCAN/FAX Functionalities

To Achieve Top Productivity

- **Skip Blank Page:** Blank page is skipped during making copies at Document Processor to save unnecessary cost.
- **Dedicated Preset Copy Mode for Special Original Media:** Newspaper Copy, Technical Drawing Copy, ID Copy.
- **Prevent Bleed-thru:** Remove unwanted background when copying or scanning printed double-sized thin paper (e.g. newspaper, NCR paper, and magazine).
- **Carbon Copy:** Print an additional copy or copies of a document from a different media source or using a different media type.
- **Banner Print:** Produce banner with various paper weight in-house anytime in need.

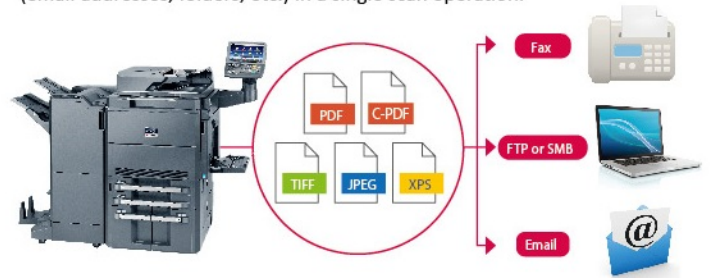


- **Tab Paper Printing:** Allow users to divide certain sections of a document by inserting index tab dividers of standard kind or customized kind produced by the users.
- **USB Scan to/Direct Print:** Scan to or print directly from USB Memory in PDF, C-PDF, TIFF, JPEG or XPS format.



- **Bates Stamp:** Add customized stamp or default stamp (e.g. date/numbering/text/User ID) manually or automatically in printing/copying/sending to facilitate audit trail and identification of the output documents.
- **Thumbnail Image Preview:** Easy to check image preview when Stamp function or Form Overlay function is used.
- **Standard Scan to Searchable PDF Function:** Scan original paper document, separates texts and images via OCR function to convert texts into text data and composes PDF by combining the images and the text data. This facilitates reuse of PDF file and easily accessible using the search function in PDF file format.
- **High Compressed PDF Size:** Adopt new image analysis technology to achieve high compressed PDF to smaller file size.
- **Scanned Image File Size Check:** Check the actual scanned document size does not exceed limit before actual sending to e-mail.

- **FTP/SMB/Email/Fax Multi-Sending:** Send document to different destinations (email addresses, folders, etc.) in a single scan operation.



- **Simple Fax Forwarding:** Forward any incoming fax to other destinations by Email, SMB or FTP (Optional).



- **i-FAX Sending (Optional):** Send and receive i-FAX without the mail service by installing Direct SMTP function.
- **Job Skip:** Automatically prioritize the error print job to avoid machine coming to a halt in case of

1. Paper empty in specific tray
2. Mismatched paper size
3. Mismatched media type

Received Order Order of Received JCBs			
Sequence	Job	Paper Size	Status
2	0002	A3	NG
2	0002	A1	OK
3	0003	A5	NG
4	0004	A4	OK

JOB Execution Order Order of Printed JCBs			
Sequence	Job	Paper Size	Status
1	0001	A1	OK
2	0001	A1	OK
3	0002	A5	NG
4	0003	A5	NG

- **Job Finish Notice:** Send email notification to specific user when a copy/scan job is completed.





Usability First Design for Smart Operation and Power Up Efficiency

- **Smart Control Panel:** Excellent clarity adjustable 10.1 inch color touch panel display with swivel type operability similar to smart phone and tablet.



- **Home Screen:** All commonly used functions and applications are found on default Home Screen. The Home Screen can be customized easily to meet different user (or Group User) needs for immediate access to commonly used functions.



- **Wireless LAN enabled (Optional):** Enhance flexibility for printing without LAN line.
- **Card Reader and USB keyboard (Optional)** are seamlessly built in with the mainframe.



With optional Card Reader Holder(E)

- **Printer Driver's Quick Print Tab:** Create and save frequently used custom profiles as graphic icons to allow programming of complex jobs in one click.
- **Custom Box:** Ease-of-use Custom Box provides long term job storage at device, allowing users to securely print and store jobs on the device and output them when required.

Dynamic and Versatile Finishing Unit for Advanced Productivity

MT-730(B): 7 bins Mailbox Sorter (Optional)

DF-790(C) Document Finisher (Optional)

for max. 4,000 sheets*

BF-730 Booklet and Tri-Folding Unit (Optional)

Standard Paper Feeder

with capacity up to 4,000 sheets

Standard Document Processor for one-path duplex scanning and copying for up to 270 sheets

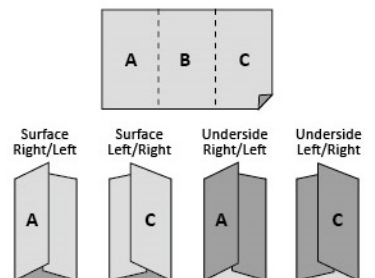
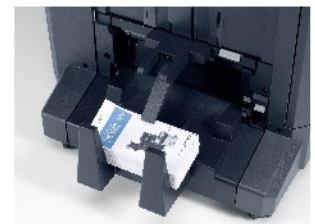
Adjustable and Ease-of-Use 10.1 inch Color Touch Panel

Standard Job Separator for up to 70 sheets

Multi-Purpose Tray for up to 150 sheets

PF-780(B) Multimedia Side Tray** (Optional) for up to 500 sheets

PF-740(B) Paper Feeder (Optional) with capacity up to 3,000 sheets



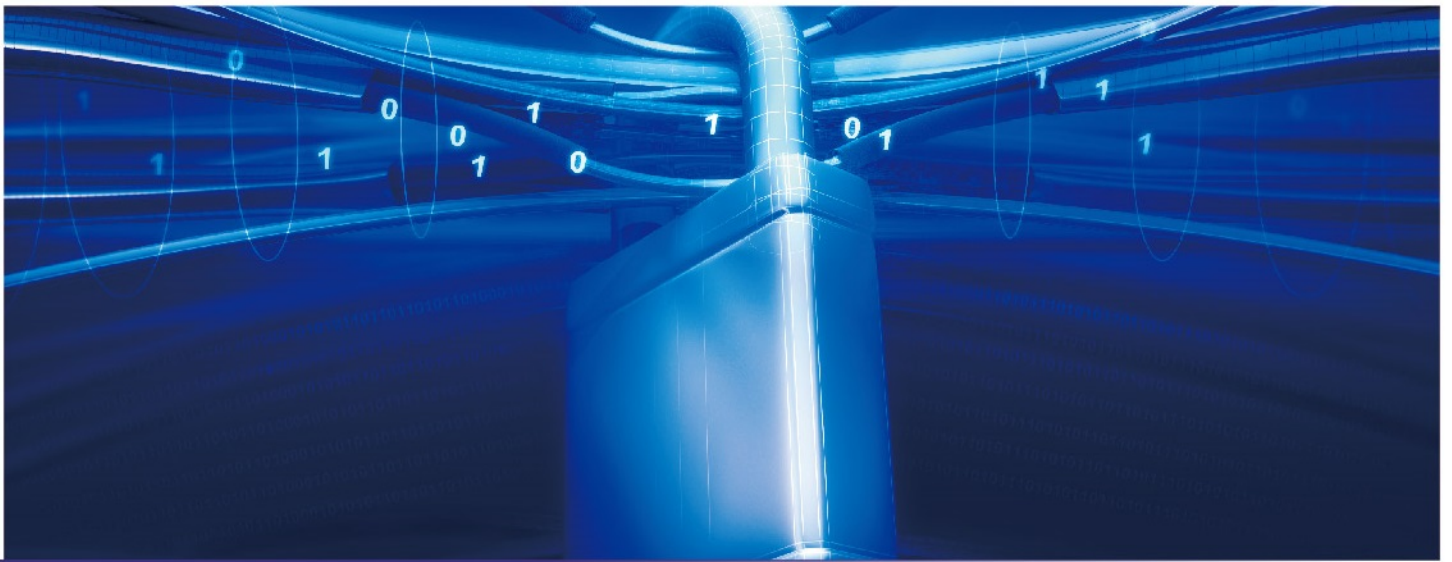
- Allow automatic stapling, manual stapling*** and booklet finishing**** (Optional).
- Provide a variety of Folding Method (Center Fold or Tri-Fold****).
Tri-Fold: 1 sheet (max. 256g/m²) to 5 sheets (max. 90g/m²).

*3,000 sheets when BF-730 is attached to DF-790(C).

**PF-780(B) is required with PF-730(B) or PF-740(B).

***Optional DF-790(C) is required.

**** Optional DF-790(C) & BF-730 are required.



Excellent Image Quality and Consistency

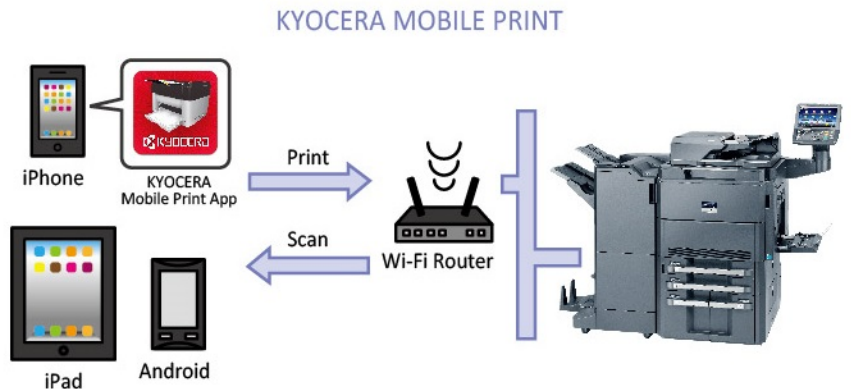
- **KYOCERA Image Refinement (KIR) technology:** Produce excellent black image quality with consistency.



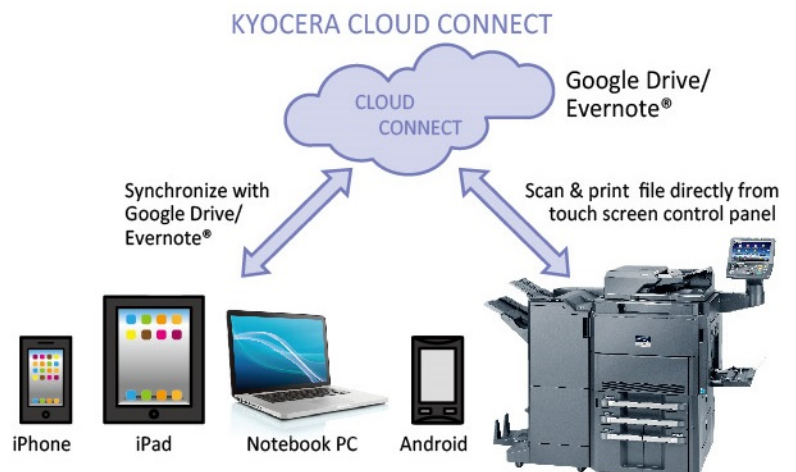
- **Build from color device technology to achieve superior output quality:** Dark solids and text; consistency of line thickness and distinction between closely spaced fine lines; and excellent halftones in both black print and copy modes.

Mobile & Cloud enable Mobile Workforce brings flexibility to Work

- **KYOCERA Mobile Print:** An app-based solution that enables users to simply and conveniently print documents, web pages, and images on demand from virtually anywhere, on their Apple and Android smartphone and tablet devices to select KYOCERA MFPs and printers. Users can also scan files and images from same MFPs to their mobile devices. Our devices also support AirPrint for iPhone and iPad.



- **KYOCERA Cloud Connect (Optional):** Retrieve and print files in Google Drive and Evernote®, a cloud service provider, directly from any KYOCERA HyPAS-enabled MFPs. You can even upload scanned files directly to Google Drive and Evernote® – directly from the MFP, without going through a computer.



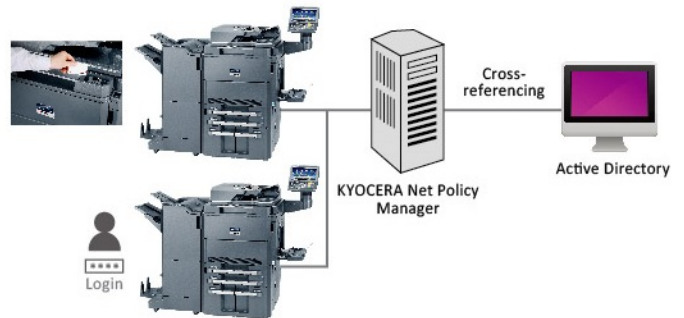
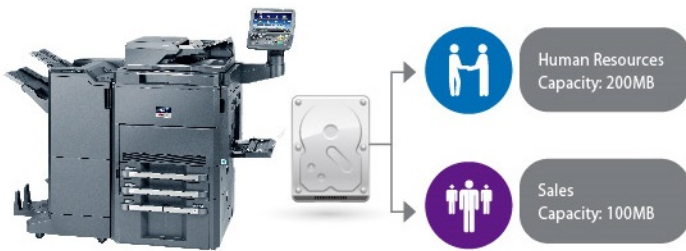


Multiple Systems for a Safe and Secure Documentation Workflow

- **Private Print:** Release print job at the device by entering a preset four-digit access code when making a print at KYOCERA KX Driver.
- **Password Protection Setting:** Allow administrator to set Password Policy to limit user access to designated capacity.

- **KYOCERA Net Policy Manager (Optional):** Give staff the flexibility to send a document to print then collect it whenever they want from whichever multifunction they prefer. This helps them avoid busy devices, prevents documents being collected by the wrong person.

If you add the Card Authentication Kit (Optional) for KYOCERA Net Policy Manager, you are able to swipe your ID Card to get your print document directly. User Administrator can also set the IC Cards to allow quick and secure access with pre-defined user restrictions such as output quota.



- With the aid of **Network Authentication**, IT Department can manage user authentication easily by incorporating with centralized Authentication Server (NTLM, Kerberos, KYOCERA Net Policy Manager*).



- **KYOCERA Data Security Kit (Optional):** Encrypt data before storing in the hard disk and automatically overwrite all data stored in the hard drive when the data becomes unnecessary.



- **Security Watermark:** Distinguish original from copies and provides protection for sensitive document against duplication.

- **FAX Memory Overwrite (Optional):** Erase FAX memory after sending or receiving for confidentiality.

Green Our World

COMPAN OFFICE

Maximize Savings, Minimize Cost

Energy savings design

- **Weekly Timer:** Allow administrator to preset the machine on and off time to optimize energy savings.
- **EcoPrint:** Flexible EcoPrint setting to consume less energy and toner.
- **Energy Saver:** 1.8w or less power consumption at Energy Saver Mode.

Design for a better environment

- Leading long life Mega Surface Amorphous Silicon (A-Si) Drum, developer and replacement parts.
- Parts for Recycling.
- Non-toxic Materials.
- Quiet operation design for a comfortable Working Environment.



Eco Mark (Japan)



EcoLeaf Environmental Label (Japan)

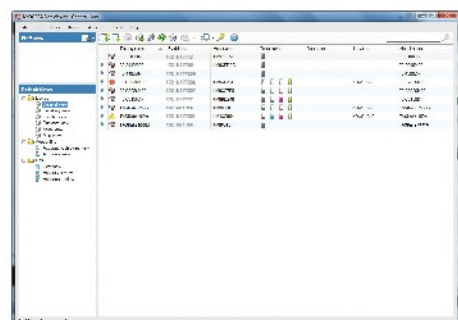


Law on Promoting Green Purchasing (Japan)

KYOCERA Document Solutions has been actively promoting the acquisition of various environment labels, aiming to provide products that are safe and comfortable for our customers to use and have minimal environmental impact.

Smart utilities for managed print and easy management system for improving work performance

- **KYOCERA Command Center RX:** By using a web browser, the authorized administrator can access the built-in KYOCERA Command Center RX and check the operation status of the device, toner level, paper availability, as well as change settings related to security, network printing and advanced network setting etc.
- **KYOCERA Net Viewer:** A comprehensive network management tool used to monitor, maintain, and update up to 100 network printing devices locally and remotely. Through KYOCERA Net Viewer, administrators can simply install and update firmware on all KYOCERA network connected devices while easily monitoring printed pages, device configuration, accounting, toner usage, and alerts. By implementing KYOCERA Net Viewer, the manpower required to monitor your connected devices is greatly reduced.



		Main Specifications	
Model		TASKalfa 6501i	TASKalfa 8001i
Main Function		Copy, Print, Scan, Fax (Optional)	
Writing Method		Semiconductor Laser	
CPU		P1022 (Dual Core) / 1067MHz	
Print Speed (A4)	Simplex (Mono)	65 cpm	80 cpm
Scanning Speed (A4, 300dpi)	Simplex (Mono/Color)	100/70 ipm	
	Duplex (Mono/Color)	180/100 ipm	
Memory/ HDD Capacity		3GB/160GB	
Warm Up Time		30 seconds	
Paper Capacity	Standard	4,150 sheets [2 x 500 sheets (Cassette) + 2 x 1,500 sheets (Cassette) + 150 sheets (MPT)]	
	Maximum	7,650 sheets (Main Unit + PF-780 + PF-740)	
Paper Size	Cassette	Min. A5R - Max. A3+ (12" x 18")	
	MPT	Min. A6R - Max. A3+ (12" x 18") & Banner Print of 1,220mm	
Paper Weight	Cassette	60 to 256 g/m ²	
	MPT	60 to 300 g/m ²	
Duplex Printing		Paper size: A5R to A3+ (12" x 18"); Paper weight: 60 to 256 g/m ²	
Control Panel		10.1 inch Color Touch LCD Panel	
Dimension (W x D x H) (Main Unit)		1,039mm x 723mm x 1,347mm (with Control Panel)	
Weight (Main Unit)		Approx. 155kg	
Power Consumption (Standard configuration)	Copy/Print Mode	1,210W or less	1,410W or less
	Stand-by Mode	300W or less	
	Energy Saver	1.8W or less	
Noise (ISO7779/ISO9296)	Copy/Print Mode	75dB(A)	
	Stand-by Mode	58dB(A)	
Copy Functions (Standard)			
Copy Size		Max. A3 (Ledger) - Min. A6R	
Resolution		600 x 600 dpi	
First Copy Time		5.2 seconds	4.7 seconds
Zoom Ratio	Manual	25% to 400% (1% per Step)	
	Pre-defined	5R5E	
Multiple Copy		1 to 9999	
Print Functions (Standard)			
Resolution		600 x 600 dpi; 9600 x 600 dpi level	
PDL		PRESCRIBE, PCL6, KPDLL3 (PostScript 3 compatible), XPS	
First Print Out Time		5.8 seconds	5.4 seconds
Supported Protocol		NetBEUI, IPv6, IPv4, IPsec, IPP, IPP over SSL, WSD Print, Bonjour	
Operating System Supported		Windows Server 2003, Windows Server 2008, Windows Server 2008 R2, Windows Server 2012, Windows XP, Windows Vista, Windows 7, Windows 8; Apple Macintosh OS 10.x	
Interface		USB2.0 High Speed x1; 1000BASE-T/100BASE-TX/10BASE-T; USB Host interface (USB Host) x4	
USB Memory Printing		Standard	
USB Memory Printing Format		TIFF, JPEG, PDF, XPS	
e-MPS Printing		Job retention and Custom Box function	
Scan Functions (Standard)			
Color Selection		Auto Color (Color/Gray); Auto Color (Color/B&W); Full Color; Grayscale; Black & White	
Resolution		600dpi, 400dpi, 300dpi, 200dpi, 200x400dpi, 200x100dpi	
File Format		TIFF, JPEG, XPS, PDF (MMR/JPG/High-compression PDF), Searchable PDF	
Image Type Mode		Text, Photo, Text + Photo, OCR	
Transmission Type		Scan to SMB; Scan to E-mail; Scan to FTP or FTP over SSL; Scan to USB; TWAIN Scan; WSD Scan; WIA Scan	
Address Storage		2,000 addresses (Common address list), 500 groups (Group address list)	
Fax Functions (Optional)			
Original Size		Max. A3 (Ledger) - Min. A5 (Statement)	
Paper Size		Max. A3 (Ledger) - Min. A5 (Statement)	
Coding Method		MMR, MR, MH, JBIG	
Transmission Speed		33.6/31.2/28.8/26.4/24.0/21.6/19.2/16.8/14.4/12.0/9.6/7.2/4.8/2.4 kbps	
Memory		Standard: 12MB; Maximum: 120MB (with optional fax memory)	
G3 FAX / DUAL FAX / Network FAX		Yes	
Internet FAX		Optional Internet FAX Kit(A)	
Consumables & Options			
Toner Kit		TK-6709	
Maintenance Kit		MK-6715A, MK-6715C	
Paper Feeder		PF-770: 3,000 sheets Side Deck (A4/Letter); PF-780(B): 500 sheets Multimedia Side Tray; PF-730(B): 500 sheets x 2 Paper Deck; PF-740(B): 1,500 sheets x 2 Paper Deck (A4/Letter)	
Finisher		DF-790(C): 4,000 sheets Finisher; PH-7C: Punch Unit; MT-730(B): 7 bins Mailbox Sorter; BF-730: Booklet and Tri-Folding Unit	
Gigabit Ethernet Board		IB-50: For Additional Network; IB-51: For Wireless	
Fax System		Fax System(W) B	
Internet FAX		Internet FAX Kit(A)	
Data Security		Data Security Kit(E)	
Document Guard		Printed Document Guard Kit(B)	
Card Authentication		Card Authentication Kit(B) / Card Reader Holder(E)	
Paper Tray		Copy Tray(D)	
Banner Guide		Banner Guide(A)	



KYOCERA Business Partner

*KYOCERA does not warrant that any specifications mentioned will be error-free. Specifications are subject to change without notice. Information is correct at time of going to press. All other brand and product names may be registered trademarks or trademarks of their respective holders and are hereby acknowledged.