



Document Solutions

> PRINT > COPY > SCAN > FAX

TASKalfa 5551ci
TASKalfa 4551ci
TASKalfa 3551ci
TASalfa 3051ci

COLOR MULTIFUNCTION PRODUCT
FOR A4/A3 FORMAT



USER-CENTRIC
TOP PERFORMING
COLOR SYSTEM



TASKalfa 



Born to be Extraordinary

KYOCERA Document Solutions is Extraordinary for

- Broad Range of Multifunctional Devices and Printers
- Optimized Total Cost of Ownership (TCO)
- Reliable with Long Life Drum and Parts
- New and Advanced Technology

KYOCERA Document Solutions strives to be a Company that contributes to the society and demonstrates “Customer First” principle by providing customers with maximum value to increase their satisfaction. By adhering to the mission of producing document management devices that take balance between “Economy” and “Ecology”, KYOCERA Document Solutions succeeds to develop document management devices with advanced technologies which help customers to optimize office productivity and efficiency at a low total cost of ownership and, at the same time, improving environmental performance.

Keep the Good, Evolve for Better, Strive for the Best

These new flagship A3 Color MFPs are developed based on award-winning models with accredited superior performance, excellent image quality and top reliability. Support KYOCERA's own business applications and other third party developed business applications, with further improvements on output image quality, functionalities, usability, energy savings and software features, these user-centric devices are perfect to match nowadays customers' requirements to boost office productivity, produce excellent business documents with various security settings and help reduce costs to your company and to the environment.

Salient User-Centric Features and Functionalities Highlights

For Obtaining Top Productivity, Security and Cost Control in PRINT, COPY, SCAN and FAX

Advanced Productivity

- A4 copy/print speed up to 55 cpm (Mono) and 50 cpm (Color).
- Fast dual scan speed up to 160 ipm A4 Color/Mono^{*1}.
- Fast first copy time in less than 4 seconds for mono and 5 seconds for color^{*2}.
- Standard 160GB hard disk capacity and 3.5GB RAM to meet heavy duty tasks without additional hard drive
- Up to maximum 7,650 sheets^{*3} paper handling capacity and weight 300g/m² media capacity^{*4}.
- Diversified Finishing capabilities to meet different users' requirements in producing professional business document especially heavy volume users.
- Intelligent calibration system ensures consistent reproduction without interruption by calibration during printing to attain top productivity in high color coverage printing, heavy media printing and booklet printing.

^{*1} When using Document Processor DP-772 for TASKalfa 5551ci and TASKalfa 4551ci.

^{*2} For TASKalfa 5551ci.

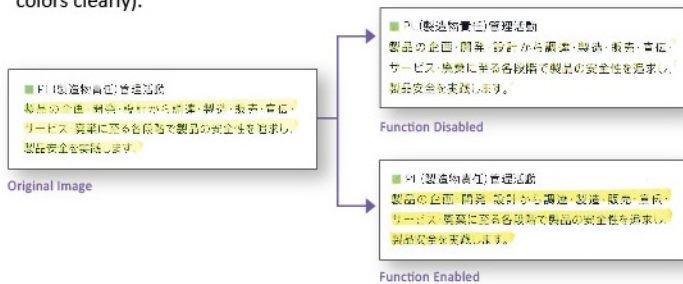
^{*3} Only applies to TASKalfa 5551ci and TASKalfa 4551ci.

^{*4} Only applies to Multi-Purpose Tray (MPT).



User-Centric Functionalities in COPY/PRINT/SCAN/FAX

- **Skip Blank Page:** Blank page is skipped during making copies at Document Processor to save unnecessary cost.
- **Dedicated Preset Copy Mode for Special Original Media:** Newspaper Copy, Technical Drawing Copy, ID Copy, Highlighter Copy (reproduce fluorescent colors clearly).



- **Prevent Bleed-thru:** Remove unwanted background when copying or scanning printed double-sized thin paper (e.g. newspaper, NCR paper, and magazine).
- **Carbon Copy:** Print an additional copy or copies of a document from a different media source or using a different media type.
- **Banner Print:** Produce banner with various paper weight in-house anytime in need.



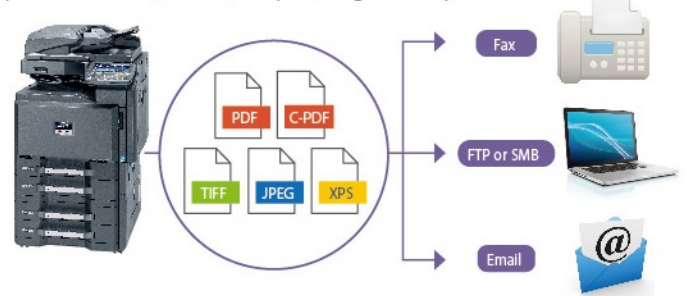
- **Tab Paper Printing:** Allow users to divide certain sections of a document by inserting index tab dividers of standard kind or customized kind produced by the users.
- **USB Scan to/Direct Print:** Scan to or print directly from USB Memory in PDF, C-PDF, TIFF, JPEG or XPS format.



- **Bates Stamp:** Add customized stamp or default stamp (e.g. date/numbering/text/User ID) manually or automatically in printing/copying/sending to facilitate audit trail and identification of output documents.
- **Thumbnail Image Preview:** Easy to check image preview when Stamp function or Form Overlay function is used.
- **Searchable PDF function (Optional):** Scan original paper document, separates texts and images via OCR function to convert texts into text data and composes PDF by combining the images and the text data. This facilitates reuse of PDF file and easily accessible using the search function in PDF file format.

- **High Compressed PDF Size:** Adopt new image analysis technology to achieve high compressed PDF to smaller file size.
- **Scanned Image File Size Check:** Check the actual scanned document size does not exceed limit before actual sending to e-mail.

- **FTP/SMB/Email/Fax Multi-Sending:** Send document to different destinations (email addresses, folders, etc.) in a single scan operation.



- **Simple Fax Forwarding:** Forward any incoming fax to other destinations by Email, SMB or FTP (Optional).



- **i-FAX Sending (Optional):** Send and receive i-FAX without the mail service by installing Direct SMTP function.
- **Job Skip:** Automatically prioritize the error print job to avoid machine come to a halt in case of

1. Paper empty in specific tray
2. Mismatched paper size
3. Mismatched media type

Received Order Order of Received Jobs			
Sequence	Job	Paper Size	Status
1	0001	A3	NG
2	0002	A4	OK
3	0003	A5	NG
4	0004	A6	OK

JOB Execution Order Order of Print Job			
Sequence	Job	Paper Size	Status
1	2002	A4	OK
2	2004	A6	OK
3	0003	A3	NG
4	0001	A5	NG

- **Job Finish Notice:** Send email notification to specified user when a copy/scan job is completed.





Design for Superb Usability

• **Intelligent Control Panel:** Excellent clarity 8.5 inch color touch panel display with swivel type operability similar to smart phone and tablet.



• **Home Screen:** All commonly used functions and applications are found on default Home Screen. The Home Screen can be customized easily to meet different use (or Group User) needs for immediate access to commonly used functions.

• **Printer Driver's Quick Print Tab:** Create and save frequently used custom profiles as graphic icons to allow programming of complex jobs in one click.

• **Custom Box:** Ease-of-use Custom Box provides long term job storage at device, allowing users to securely print and store jobs on the device and output them when required.

• Card Reader and USB keyboard are seamlessly built in with the mainframe.

• **Wireless LAN enabled (Optional):** Enhance flexibility for printing without LAN line.

Strengthen Productivity with Versatile Finishing Unit

MT-730(B): 7 bins Mailbox Sorter (Optional)

AK-731 Paper Exit Path for Finisher (Optional)

for attachment with Finisher

DF-790(C) Document Finisher (Optional)

for max. 4,000 sheets*

BF-730 Booklet and Tri-Folding Unit (Optional)

PF-730(B) Paper Feeder (Optional)

2 cassettes with 500 sheets each

DP-772 Document Processor (Optional)
for one-path duplex scanning and copying

User-friendly 8.5 inch Color Touch Panel

JS-731 External Job Separator (Optional)
for up to 70 sheets

Multi-Purpose Tray
for up to 150 sheets

PF-780(B) Multimedia Side Tray** (Optional)
for up to 500 sheets

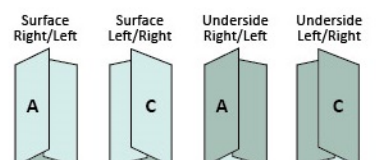
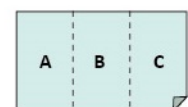
PF-740(B) Paper Feeder (Optional)
with capacity up to 3,000 sheets



DF-770(C) (Optional)
(1,000 sheet Finisher with staple function)

• Allow automatic stapling, manual stapling*** and booklet finishing**** (Optional).

• Provide a variety of Folding Method (Center Fold or Tri-Fold****).
Tri-Fold: 1 sheet (max. 256g/m²) to 5 sheets (max. 90g/m²).



*3,000 sheets when BF-730 is attached to DF-790(C).

**Install PF-780(B) with PF-730(B) or PF-740(B) as Side Deck for TASKalfa 4551ci/5551ci.

***Optional DF-790(C) is required.

****Optional DF-790(C) & BF-730 are required.



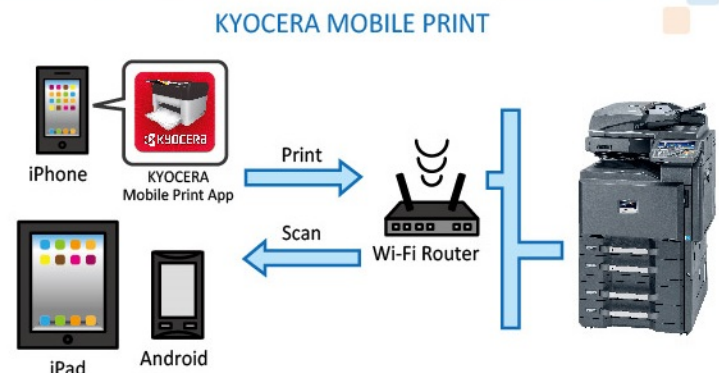
Excellent Image Quality and Color Consistency

- **KYOCERA Image Refinement (KIR) technology** to produce excellent black and color image quality with consistency.
- **Multiple Image Adjustment Tools** for optimal output:
 - **Color Optimizer at KYOCERA KX Driver:** Allow users to adjust the pixels near the color value or color space of defined areas instead of the entire image by selecting 2 from 3 parameters (Hue, Light, Saturation) and add up to 10 colors in each adjustment settings.
 - **One-Touch Color Image Adjustment:** Total 9 photo adjustment modes to select optimal settings for photo image (Portrait; Blue Scenery; Green Scenery; Vivid; Soft; Sharp; Smooth; Light; Heavy).
 - **Print Gray as Black:** Improve text recognition and decreases color shadowing to reproduce accurate grayscale image.

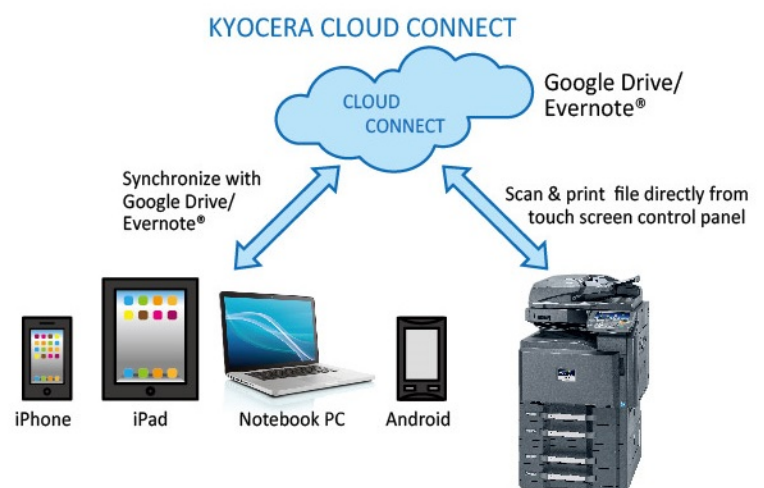


Mobile & Cloud for a Mobile Office

- **KYOCERA Mobile Print:** An app-based solution that enables users to simply and conveniently print documents, web pages, and images on demand from virtually anywhere, on their Apple and Android smartphone and tablet devices to select KYOCERA MFPs and printers. Users can also scan files and images from same MFPs to their mobile devices. Our devices also support AirPrint for iPhone and iPad.



- **KYOCERA Cloud Connect (Optional):** Retrieve and print files in Google Drive and Evernote®, a cloud service provider, directly from any KYOCERA HyPAS-enabled MFPs. You can even upload scanned files directly to Google Drive and Evernote® – directly from the MFP, without going through a computer.



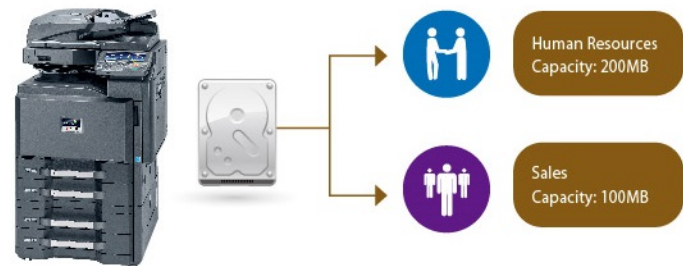


Multiple Systems for a Safe and Secure Documentation Workflow

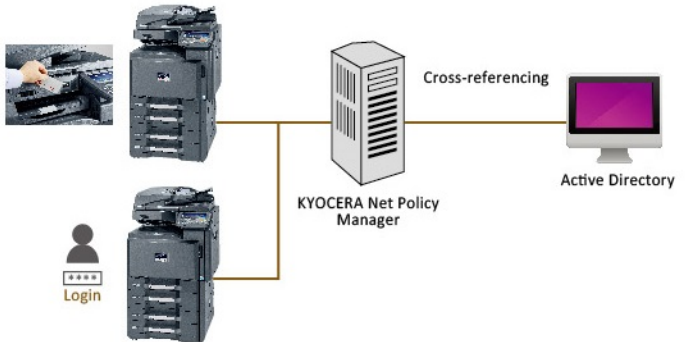
- **Private Print:** Release print job at the device by entering a preset four-digit access code when making a print at KYOCERA KX Driver.
- **Password Protection Setting:** Allow administrator to set Password Policy to limit user access to designated capacity.

- **KYOCERA Net Policy Manager (Optional):** Give staff the flexibility to send a document to print then collect it whenever they want from whichever multifunctional they prefer. This helps them avoid busy devices, prevents documents being collected by the wrong person.

If you add the Card Authentication Kit (Optional) for KYOCERA Net Policy Manager, you are able to swipe your ID Card to get your print document directly. User Administrator can also set the IC Cards to allow quick and secure access with pre-defined user restrictions such as color output restrictions and output quota.



- With the aid of **Network Authentication**, IT Department can manage user authentication easily by incorporating with centralized Authentication Server (NTLM, Kerberos, KYOCERA Net Policy Manager*).



- **KYOCERA Data Security Kit (Optional):** Encrypt data before storing in the hard disk and automatically overwrite all data stored in the hard drive when the data becomes unnecessary.
- **FAX Memory Overwrite (Optional):** Erase FAX memory after sending or receiving for confidentiality.

- **Security Watermark:** Distinguish original from copies and provides protection for sensitive document against duplication.





Maximize Savings, Minimize Cost

Design for energy savings

- **Weekly Timer:** Allow administrator to preset the machine on and off time to maximize power savings.
- **EcoPrint:** Flexible EcoPrint setting to consume less energy and toner.
- **Energy Saver:** 1.8w or less power consumption at deep sleep Mode.

Design for a better environment

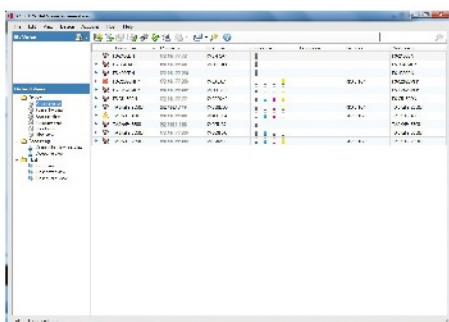
- Leading Long-life Mega Surface Amorphous Silicon (A-Si) Drum, developer and replacement parts.
- Parts for Recycling.
- Non-toxic Materials.
- Quiet operation design for a comfortable Working Environment.

Smart utilities for managed print and minimize related device management costs

- **KYOCERA Command Center RX:** By using a web browser, the authorized administrator can access the built-in KYOCERA Command Center RX and check the operation status of the device, toner level, paper availability, as well as change settings related to security, network printing and advanced network setting etc.



- **KYOCERA Net Viewer:** A comprehensive network management tool used to monitor, maintain, and update up to 100 network printing devices locally and remotely. Through KYOCERA Net Viewer, administrators can simply install and update firmware on all KYOCERA connected devices while easily monitoring printed black/color pages, device configuration, accounting, toner usage, and alerts. By implementing KYOCERA Net Viewer, the manpower required to monitor your connected devices is greatly reduced.





Eco Mark (Japan)



EcoLeaf Environmental Label (Japan)



Law on Promoting Green Purchasing (Japan)

KYOCERA Document Solutions has been actively promoting the acquisition of various environment labels, aiming to provide products that are safe and comfortable for our customers to use and have minimal environmental impact.

- **Easy Lock (Optional):** A simple solution that help you to control color copying of your MFPs.
 1. Enter an access code to make color copy.
 2. Press "Public Access" directly to make black & white copy.



		Main Specifications				
Model		TASKalfa 3051ci	TASKalfa 3551ci	TASKalfa 4551ci	TASKalfa 5551ci	
Main Function		Copy, Print, Scan, Fax (Optional)				
Writing Method		Semiconductor Laser				
CPU		P1022 (Dual Core) / 800MHz		P1022 (Dual Core) / 1067MHz		
Print Speed (A4)	Simplex (Mono/Color)	30/30 cpm	35/35 cpm	45/45 cpm	55/50 cpm	
	DP-770(B) (Mono/Color)	Simplex	65/65 ipm	65/65 ipm	75/75 ipm	75/75 ipm
		Duplex	39/39 ipm	39/39 ipm	45/45 ipm	45/45 ipm
		DP-772 (Mono/Color)	Simplex	70/70 ipm	70/70 ipm	80/80 ipm
	Duplex	100/100 ipm	100/100 ipm	160/160 ipm	160/160 ipm	
Memory/ HDD Capacity		3.5GB/ 160GB		3.5GB/ 160GB		
Warm Up Time		25 seconds	25 seconds	30 seconds	30 seconds	
Paper Capacity	Standard	2 x 500 sheets (Cassette) + 150 sheets (MPT)				
	Maximum	7,150 sheets (Main Unit + PF-740(B) + PF-770 + MPT)				
Paper Size	Cassette	Min. A5R - Max.12"x18" (304 x 457mm)				
	MPT	Min. A6R - Max.12"x18" (304 x 457mm) & Banner Print of 1,220mm				
Paper Weight	Cassette	60 to 220 g/m ² (Standard); 60 to 256 g/m ² (Optional)		60 to 256 g/m ² (Standard & Optional)		
	MPT	60 to 300 g/m ²				
Duplex Printing		Paper size: B5 to 12"x18"; Paper weight: 60 to 256 g/m ²				
Control Panel		8.5 inch Color Touch LCD Panel				
Dimension (W x D x H) (Main Unit)		648 mm x 767 mm x 747 mm				
Weight (Main Unit)		Approx. 114kg				
Power Consumption (Standard Configuration)	Copy/Print Mode	Mono: 660W or less; Color: 730W or less	Mono: 690W or less; Color: 740W or less	Mono: 990W or less; Color: 1,030W or less	Mono: 1,050W or less; Color: 1,140W or less	
	Stand-by Mode	200W or less				
	Energy Saver	1.8W or less				
Noise (ISO7779/ISO9296)	Copy/Print Mode	68dB(A)	69.5dB(A)	72.5dB(A)	Mono: 75dB(A); Color: 74dB(A)	
	Stand-by Mode	58dB(A)				
Copy Functions (Standard)						
Copy Size		Max. A3 (Ledger) - Min. A6R				
Resolution		600 x 600 dpi				
First Copy Time (Mono/Color)		5.5 sec / 7.3 sec	4.8 sec / 6.4 sec	3.9 sec / 5.1 sec	3.4 sec / 4.7 sec	
Zoom Ratio	Manual	25% to 400% (1% per Step)				
	Pre-defined	Easy setting: 4R4E; Detail setting: 13 steps				
Multiple Copy		1 to 999				
Print Functions (Standard)						
Resolution		600 x 600 dpi; 9600 x 600 dpi level				
PDL		PRESCRIBE, PCL6, KPDL3 (PostScript 3 compatible), XPS, PDF Direct Print				
First Print Out Time (Mono/Color)		7.3 sec / 9.5 sec	6.2 sec / 8.0 sec	5.4 sec / 6.6 sec	4.9 sec / 6.2 sec	
Supported Protocol		NetBEUI, IPv6,IPv4, IPsec, IPP, IPP over SSL, WSD Print, Bonjour				
Operating System Supported		Windows Server 2003, Windows Server 2008, Windows Server 2008 R2, Windows Server 2012, Windows XP, Windows Vista, Windows 7, Windows 8; Apple Macintosh OS 10.x				
Interface		1000BASE-T/100BASE-TX/10BASE-T; USB2.0 High Speed x1; USB Host interface (USB Host) X 4				
USB Memory Printing		Standard				
USB Memory Printing Format		TIFF, JPEG, PDF, XPS				
e-MPS Printing		Job retention and Custom Box function				
Scan Functions (Standard)						
Color Selection		Auto Color (Color/Gray); Auto Color (Color/B&W); Full Color; Grayscale; Black & White				
Resolution		600dpi, 400dpi, 300dpi, 200dpi, 200 x 100dpi, 200 x 400dpi				
File Format		TIFF, JPEG, XPS, PDF (MMR/JPG/High-compression PDF), Searchable PDF (Optional)				
Image Type Mode		Text, Photo, Text + Photo				
Transmission Type		Scan to SMB; Scan to E-mail; Scan to FTP or FTP over SSL; Scan to USB; TWAIN Scan; WSD Scan				
Address Storage		2,000 addresses (Common address list), 500 groups (Group address list)				
Fax Functions (Optional)						
Original Size		Max. A3 (Ledger) - Min. A5 (Statement)				
Paper Size		Max. A3 (Ledger) - Min. A5 (Statement)				
Coding Method		MMR, MR, MH, JBIG				
Transmission Speed		33.6/31.2/28.8/26.4/24.0/21.6/19.2/16.8/14.4/12.0/9.6/7.2/4.8/2.4 kbps				
Memory		Standard: 12MB; Maximum: 120MB (with optional fax memory)				
G3 FAX / DUAL FAX / Network FAX		Yes				
Internet FAX		Optional Internet FAX Kit(A)				
Consumables & Options						
Toner Kit		TK-8309 (C/M/Y/K)	TK-8309 (C/M/Y/K)	TK-8509 (C/M/Y/K)	TK-8509 (C/M/Y/K)	
Maintenance Kit		MK-8305 (A/B/C)	MK-8305 (A/B/C)	MK-8505 (A/B/C)	MK-8505 (A/B/C)	
Platen Cover		Platen Cover Type E				
Document Processor		DP-770(B): RADF Type; DP-772: One-path duplex scanning Type				
Paper Feeder		PF-770: 3,000 sheet Paper Side Deck (A4/Letter); PF-780(B): Multimedia Paper Side Tray; PF-730(B): 500 sheets x 2 Paper Deck; PF-740(B): 1,500 sheets x 2 Paper Deck(A4/Letter)				
Job Separator		JS-730/ JS-732: Inner type Job Separator; JS-731: External Job Separator				
Finisher		AK-731: Paper Exit Path for Finisher; DF-770(C): 1,000 sheet Finisher; DF-790(C): 4,000 sheet Finisher; PH-7C: Punch Unit; MT-730(B): 7 bins Mailbox Sorter; BF-730: Booklet Folder; Staple: SH-10 and SH-12				
Fax System		Fax System (W)				
Internet FAX		Internet FAX Kit (A)				
Data Security		Data Security Kit (E)				
Document Guard		Printed Document Guard Kit (B)				
Card Authentication		Card Authentication Kit (B) / Card Reader Holder (E)				
Gigabit Ethernet Board		IB-50				
Wireless LAN Interface		IB-51				
Embedded OCR		Scan Extension Kit (A)				
Banner Guide		Banner Guide (A)				