



Document Solutions

> PRINT > COPY > SCAN > FAX

TASKalfa 2552ci

TASKalfa 3252ci

TASKalfa 4052ci

TASKalfa 5052ci

TASKalfa 6052ci

COLOR MULTIFUNCTION  
PRODUCT  
FOR A4/A3 FORMAT

# OPTIMIZED WORKFLOW WITH SUPERIOR QUALITY



KYOCERA MyPanel

Mobile Print



PinPoint Scan

Teaching Assistant

Cloud Connect



- High image quality with real 1,200dpi printing resolution.
- Fast first copy time (mono: 3.4 seconds; color: 4.4 seconds) and warm up time 17 seconds or less\*.
- 320GB hard disk capacity\*\* and 4GB RAM to meet heavy duty tasks without additional hard drive.
- Support A6 original scanning from Document Processor with dual scan speed up to 180/180 ipm A4 Mono/Color\*\*\*.
- Support SRA3(320mm x 450mm) size & 300g/m<sup>2</sup> paper from standard cassette.
- Support Banner Print and Scan.
- Semi auto self-closing paper cassette.
- Support robust optional Inner Finisher.

\*For TASKalfa 6052ci

\*\*Optional for TASKalfa 2552ci / 3252ci

\*\*\*For TASKalfa 4052ci / 5052ci / 6052ci, when using optional Document Processor DP-7110





# Born to be Extraordinary

## KYOCERA Document Solutions is Extraordinary for

- Broad Range of Multifunction Devices and Printers
- Optimized Total Cost of Ownership (TCO)
- Reliable with Long Life Drum and Parts
- New and Advanced Technology

KYOCERA Document Solutions strives to be a company that contributes to the society and demonstrates "Customer First" principle by providing customers with maximum value to increase their satisfaction. By adhering to the mission of producing document management devices that take balance between "Economy" and "Ecology", KYOCERA Document Solutions succeeds to develop document management devices with advanced technologies which help customers to optimize office productivity and efficiency at a low total cost of ownership and, at the same time, improving environmental performance.

## Simplify Business Routine

These models redefine color multifunction system by incorporating flexibility and integrated business applications to fulfill document imaging needs and complex color projects requirements with ease.

Delivering professional A4/A3 image quality with ultra-reliability, these color multifunction products would increase productivity no matter how workflows are organized.

## Handle Heavy Workload Perfectly

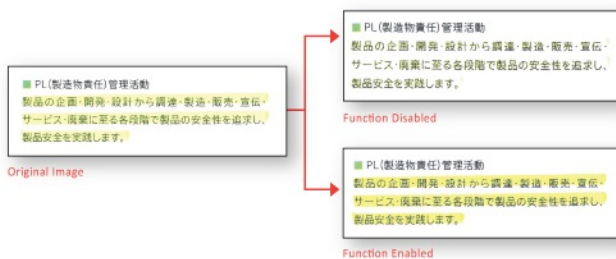






## Powerful Functionality in COPY/PRINT/SCAN/FAX

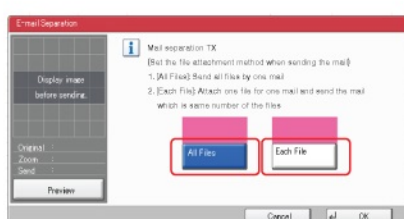
- **Test Copy:** Reduce miscopy when copying large volume by using the Test Copy mode.
- **Duplex Preview:** Display both front and back sides before printing (Copy/Box Print function).
- **Skip Blank Page:** Blank page is skipped during making scans/copies to save unnecessary cost.
- **Dedicated Preset Copy Mode for Special Original Media:** Newspaper Copy, Technical Drawing Copy, ID Copy, Highlighter Copy (reproduce fluorescent colors clearly).



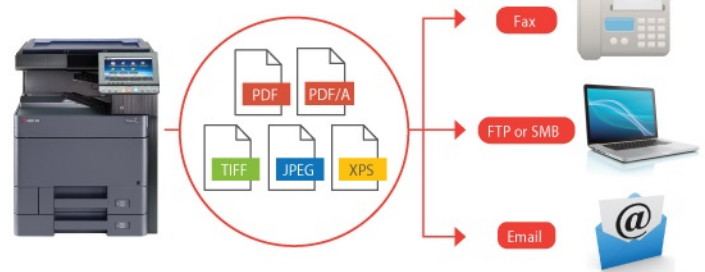
- **Prevent Bleed-thru:** Remove unwanted background when copying or scanning printed double-sized thin paper (e.g. newspaper, NCR paper, and magazine).
- **Carbon Copy:** Print an additional copy or copies of a document from a different media source or using a different media type.
- **Banner Send & Print:** Scan and produce banner with various paper weight in-house anytime in need (One-sided only).



- **Customize Scan Split:** Scan by split at specified page and allow send all scan files via one email or send files separately by emails.



- **USB Scan to/Direct Print:** Scan to or print directly from USB Memory in PDF, PDF/A, TIFF, JPEG or XPS format.
- **Scanned Image File Size Check:** Check the actual scanned document size does not exceed limit before actual sending to e-mail.
- **FTP/SMB/Email/Fax Multi-Sending:** Send document to different destinations (email addresses, folders, etc.) in a single scan operation.

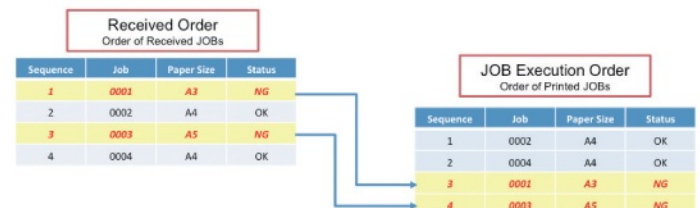


- **Simple Fax Forwarding:** Forward any incoming fax to other destinations by Email, SMB or FTP (Optional).



- **i-FAX Sending (Optional):** Send and receive i-FAX without the mail service by installing Direct SMTP function.
- **Job Skip:** Automatically prioritize the error print job to avoid machine come to a halt in case of

1. Paper empty in specific tray
2. Mismatched paper size
3. Mismatched media type



- **Job Finish Notice:** Send email notification to specified user when a copy/scan job is completed.





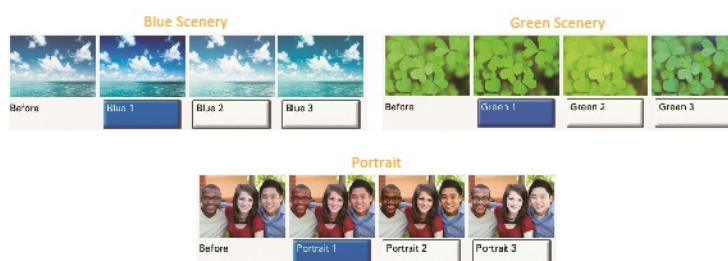
## Remarkable Features for Easy Operations

- **Intuitive navigation:** Excellent clarity 9 inch color touch panel display with swivel type operability similar to smart phone and tablet and tiltable from 15 degree to 90 degree.
- **Convenience to use Keypad:** With on-screen virtual numeric keypad (hardware keypad is optional), users can type in with ease.
- **Home Screen:** All commonly used functions and applications are found on default Home Screen. The Home Screen can be customized easily to meet different use (or Group User) needs for immediate access to commonly used functions.
- **Printer Driver's Quick Print Tab:** Create and save frequently used custom profiles as graphic icons to allow programming of complex jobs in one click.
- **Custom Box:** Ease-of-use Custom Box provides long term job storage at device, allowing users to securely print and store jobs on the device and output them when required.
- **Semi auto self-closing cassettes:** Cassettes auto drawing within 40mm.



## Optimized Quality

- **Powerful color performance**
  - Vibrant color with 1,200 x 1,200 dpi print resolution with same engine speed.
  - Adopt dual components developing method to produce superior image and color quality#.
  - Contrast selection with copy/scan.
  - Multiple Image Adjustment Tools for optimal output:
    - **Color Optimizer at KYOCERA KX Driver:** Allow users to adjust the pixels near the color value or color space of defined areas instead of the entire image by selecting 2 from 3 parameters (Hue, Light, Saturation) and add up to 10 colors in each adjustment settings.
    - **One-Touch Color Image Adjustment:** Total 9 photo adjustment modes to select optimal settings for photo image (Portrait; Blue Scenery; Green Scenery; Vivid; Soft; Sharp; Smooth; Light; Heavy).
    - **Print Gray with Black Toner:** Improve text recognition and decreases color shadowing to reproduce accurate grayscale image.

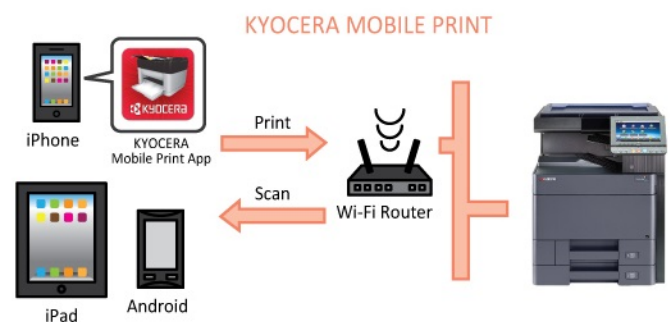




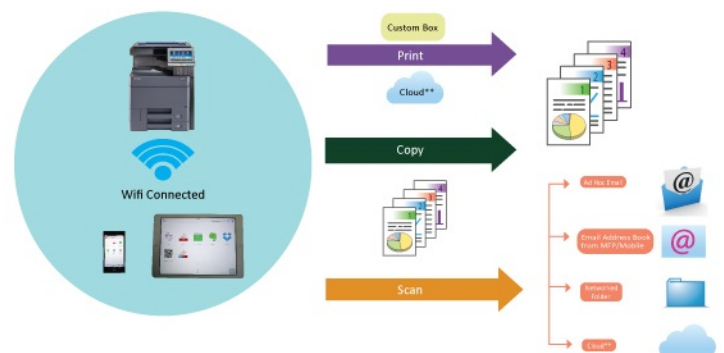


## Empower workforce with KYOCERA Mobile & Cloud Solutions

- KYOCERA Mobile Print:** An app-based solution that enables users to simply and conveniently print documents, web pages, and images on demand from virtually anywhere, on their Apple and Android smartphone and tablet devices to select KYOCERA MFPs and printers. Users can also scan files and images from same MFPs to their mobile devices. Our devices also support AirPrint for iPhone and iPad.



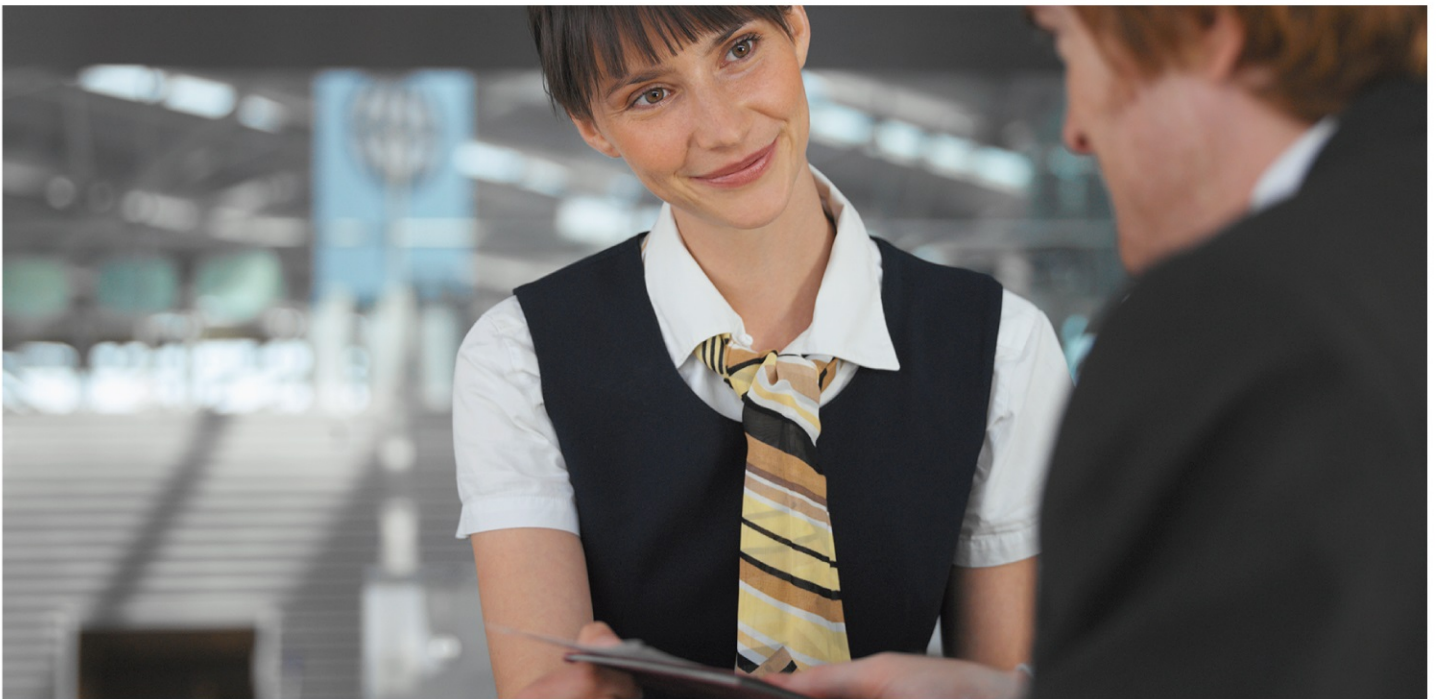
- KYOCERA MyPanel:** Use smartphone or tablet to connect a compatible networked KYOCERA printing device on your local Wi-Fi network wirelessly. Users can perform COPY/PRINT/SCAN from Custom Box or Cloud<sup>##</sup> by mobile devices with personalize settings.



<sup>##</sup>Cloud Application Supported: Dropbox, Evernote, OneDrive

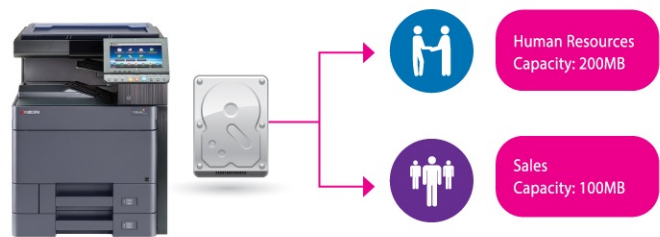
- KYOCERA Cloud Connect (Optional):** Retrieve and print files in Google Drive and Evernote<sup>®</sup>, a cloud service provider, directly from any KYOCERA HyPAS-enabled MFPs. Users can even upload scanned files directly to Google Drive and Evernote<sup>®</sup> – directly from the MFP, without going through a computer.
- Support WiFi Direct:** Support IB-35 Wireless LAN (Optional), makes print/scan via AirPrint/Google Cloud Print/Mopria/KYOCERA Mobile Print/KYOCERA MyPanel much easier.





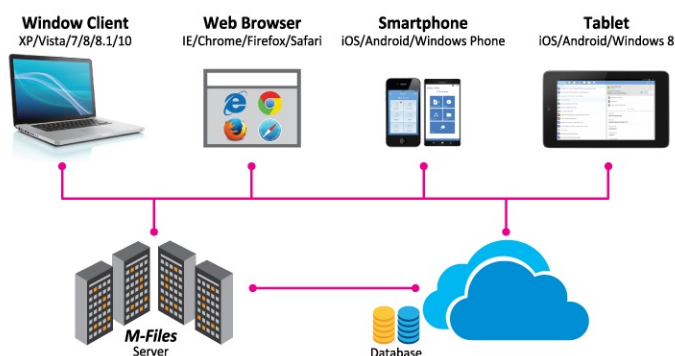
# Secure Documents

- **Password Protection Setting:** Allow administrator to set Password Policy to limit user access to designated capacity.
- **Private Print:** Release print job at the device by entering a preset four-digit access code when making a print at KYOCERA KX Driver.
- With the aid of **Network Authentication**, IT Department can manage user authentication easily by incorporating with centralized Authentication Server (NTLM, Kerberos, KYOCERA Net Manager\*).



\* Optional

- **FAX Memory Overwrite (Optional):** Erase FAX memory after sending or receiving for confidentiality.
- **Security Watermark:** Distinguish original from copies and provides protection for sensitive document against duplication.
- **M-Files (Optional):** Manage all information e.g. documents, projects and business processes etc and adds intelligence by combining it with information from other systems (like SharePoint, Salesforces and SAP). This ensures you always find what you need, no matter what system you are using.
- **KYOCERA Data Security Kit (Optional):** Encrypt data before storing in the hard drive and automatically overwrite all data stored in the hard drive when the data becomes unnecessary.







## Go Green

### Design for energy savings

- **Fast warm up:** With the new IH fuser, the warm up time is shorter and power consumption is less.
- **Weekly Timer:** Allow administrator to preset the machine on and off time to maximize power savings.
- **EcoPrint:** Flexible EcoPrint setting to consume less energy and toner.
- **Energy Saver:** 1.0w or less power consumption at Energy Saver Mode.

### Protect the environment

- Leading Long-life Mega Surface Amorphous Silicon (a-Si) Drum (TASKalfa 4052ci/5052ci/6052ci), developer and replacement parts.
- Parts for Recycling.
- Non-toxic Materials.
- Quiet operation design for a comfortable Working Environment.



Eco Mark (Japan)



EcoLeaf Environmental Label (Japan)



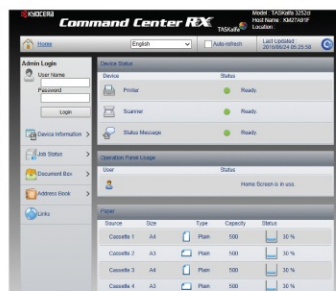
Law on Promoting Green Purchasing (Japan)

KYOCERA Document Solutions has been actively promoting the acquisition of various environment labels, aiming to provide products that are safe and comfortable for our customers to use and have minimal environmental impact.

## Simplify Management

### Smart utilities for managed print and minimize related device management costs.

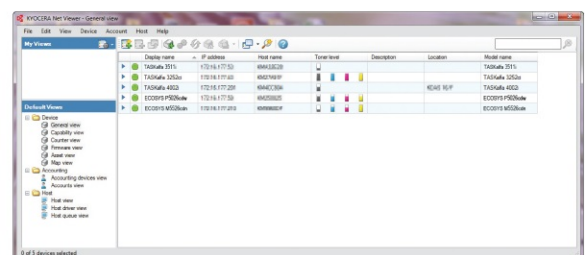
- **KYOCERA Command Center RX:** By using a web browser, the authorized administrator can access the built-in KYOCERA Command Center RX and check the operation status of the device, toner level, paper availability, as well as change settings related to security, network printing and advanced network setting etc.



- **KYOCERA Net Manager (Optional):** Protect confidential data, manage & control the overall output (copy/print/scan) and get detailed reports. Users can keep an overview of personal printing jobs with web browser. It greatly simplifies scanning processes as it automatically displays a set of personalized options.

By adding the Card Authentication Kit (Optional) for KYOCERA Net Manager, you are able to swipe ID Card to get print document directly. User administrator can also set the IC Cards to allow quick and secure access with pre-defined user restrictions such as color output restrictions and output quota.

- **KYOCERA Net Viewer:** A comprehensive network management tool used to monitor, maintain, and update up to 100 network printing devices locally and remotely. Through KYOCERA Net Viewer, administrators can simply install and update firmware on all KYOCERA connected devices while easily monitoring printed black/color pages, device configuration, accounting, toner usage, and alerts. By implementing KYOCERA Net Viewer, the manpower required to monitor connected devices is greatly reduced.





			Main Specifications									
Model			TASKalfa 2552ci		TASKalfa 3252ci	TASKalfa 4052ci		TASKalfa 5052ci		TASKalfa 6052ci		
Main Function			Copy, Print, Scan, Fax (Optional)									
Writing Method			Semiconductor Laser									
CPU			T1024 (Dual Core) 1.0GHz				T1024 (Dual Core) 1.2GHz					
Print Speed (A4) (Mono/Color)			25/25 ppm		32/32 ppm		40/40 ppm		50/50 ppm		60/55 ppm	
Scanning Speed (A4) 300dpi	DP-7100 (Mono/Color)	Simplex	48/48 ipm				80/80 ipm					
	Duplex	48/48 ipm										
Scanning Speed (A4) 300dpi	DP-7120 (Mono/Color)	Simplex	48/48 ipm				----					
	Duplex	15/15 ipm				----						
Scanning Speed (A4) 300dpi Dual Scan	DP-7110 (Mono/Color)	Simplex	80/80 ipm				100/100 ipm					
	Duplex	160/160 ipm				180/180 ipm						
Memory			Standard 4GB (Max. 4GB)									
SSD/HDD Capacity			SSD 32GB (Standard) / HDD 320GB (Optional)				SSD 8GB (Standard) / HDD 320GB (Standard)					
Warm Up Time			18 seconds				17 seconds					
Paper Capacity	Standard	2 x 500 sheets (Cassette) + 150 sheets (MPT)										
	Maximum	7,150 sheets (Main Unit + 2 x 1,500 sheets PF-7110 x1 + 3,000 sheets PF-7120 x1 + MPT)										
Paper Size	Cassette	Min. A6R – Max. SRA3(320mm x 450mm); Cassette 1 Min. A6R – Max. A4R (Legal)										
	MPT	Min. A6R – Max. SRA3(320mm x 450mm) & Banner Print of 1,200mm										
Paper Weight	Cassette	52 – 300 g/m <sup>2</sup>										
	MPT	52 – 300 g/m <sup>2</sup>										
Duplex Printing			Paper size: A6R – SRA3(320mm x 450mm); Paper weight: 64 - 256 g/m <sup>2</sup>									
Output Capacity			Max. 500 sheets + 100 sheets face-down with Inner Job Separator									
Control Panel			9 inch Color Touch LCD Panel									
Dimension (W x D x H) (Main Unit)			602mm x 665mm x 790mm									
Weight (Main Unit)			Approx. 89 kg				Approx. 92 kg					
Power Consumption (Standard configuration)	Copy/Print Mode	500W	600W		730W		860W		960W			
	Stand-by Mode	60W										
	Energy Saver	0.9W				1.0W						
Noise (ISO7779/ ISO9296)	Copy/Print Mode	67dB(A)	68dB(A)		70dB(A)		71dB(A)		72dB(A)			
	Stand-by Mode	35dB(A)										
			Copy Functions (Standard)									
Copy Size			Max. A3 (Legal) – Min. A6R									
Resolution			600 x 600 dpi									
First Copy Time (Mono/Color)			6.4/8.5 seconds		5.3/7.0 seconds		4.5/5.9 seconds		3.7/4.8 seconds		3.4/4.4 seconds	
Zoom Ratio	Manual	25% – 400% (1% per Step)										
	Pre-defined	7R5E										
Multiple Copy			1 – 999									
			Print Functions (Standard)									
Resolution			1,200 x 1,200 dpi; 4,800 x 1,200 dpi level									
PDL			PRESCRIBE, PCL6 (PCL-XL, PCL 5c), KPDLL3 (Postscript 3 compatible), XPS, OpenXPS, PDF Direct Print Ver. 1.7									
First Print Out Time (Mono/Color)			7.0/9.2 seconds		5.9/7.7 seconds		5.1/6.5 seconds		4.3/5.4 seconds		3.8/5.1 seconds	
Supported Protocol			TCP/IP, NetBEUI, FTP, Port 9100, LPR, IPP, IPP over SSL/TLS, WSD Print, Apple Bonjour									
Operating System Supported			Windows Server 2003, Windows Server 2008, Windows Server 2008 R2, Windows Server 2012, Windows Server 2012 R2, Windows XP, Windows Vista, Windows 7, Windows 8, Windows 8.1; Apple Macintosh OS X 10.5 or later; Linux									
Interface			USB 2.0 High Speedx1; Ethernet 10BASE-T/100BASE-TX/1000BASE-T; USB Host Interface (USB Host)x4; NFC TAGx1									
USB Memory Printing Format			TIFF, JPEG, PDF, XPS									
Mobile Printing			AirPrint, Mopria, KYOCERA Mobile Print									
			Scan Functions (Standard)									
Color Selection			Auto Color (Color/Gray); Auto Color (Color/B&W); Full Color; Grayscale; Black & White									
Resolution			600dpi, 400dpi, 300dpi, 200dpi, 200x400dpi, 200x100dpi									
File Format			TIFF, JPEG, XPS, OpenXPS, PDF (MMR/JPG compression/High-compression PDF), PDF/A, Encrypted PDF, Searchable PDF (Optional)									
Image Type Mode			Text, Photo, Text + Photo, Text (Fine Line)									
Transmission Type			Scan to SMB; Scan to E-mail; Scan to FTP or FTP over SSL; Scan to USB; TWAIN Scan; WSD Scan									
Address Storage			2,000 addresses (Common address list), 500 groups (Group address list)									
			Fax Functions (Optional)									
Original Size			Max. A3 (Legal) – Min. A6									
Coding Method			MMR, MR, MH, JBIG									
Transmission Speed			33.6 kbps									
Memory			12MB									
DUAL FAX / Network FAX			Yes									
			Consumables & Options									
Toner Kit			TK-8349 (C/M/Y/K)		TK-8339 (C/M/Y/K)		TK-8529 (C/M/Y/K)		TK-8519 (C/M/Y/K)			
Maintenance Kit			MK-8335 (A/B/D/E)				MK-8515 (A/B)					
Document Processor			DP-7100: 140 sheets RADF Type; DP-7120: 50 sheets RADF Type (TASKalfa 2552ci / TASKalfa 3252ci only); DP-7110: 270 sheets One-path duplex scanning Type									
Paper Feeder			PF-7100: 500 sheets x 2; PF-7110: 1,500 sheets x 2 (A4/Letter); PF-7120: 3,000 sheets Large capacity side deck (A4/Letter)									
Finisher			DF-7100: Inner Finisher; AK-7100: Attachment Kit; DF-7120: 1,000 sheets Finisher; DF-7110: 4,000 sheets Finisher; PH-7C: Punch Unit for DF-7110/ DF-7120; PH-7120: Punch Unit for DF-7100; MT-730(B): 7 Bin Mailbox; JS-7100: Inner Job Separator; BF-730: Booklet Folder; SH-10: Staple for DF-7100; SH-12: Staple for DF-7110/DF-7120									
Fax System			Fax System 12									
Internet FAX			Internet FAX Kit(A)									
Data Security			Data Security Kit(E)									
Card Authentication			Card Authentication Kit(B)									
Gigabit Ethernet Board			IB-50									
Wireless LAN Interface			IB-35 (802.11 b/g/n/Wireless LAN/WiFi Direct)									
Storage Device			HD-12: HDD 320GB (TASKalfa 2552ci/ 3252ci only)									
Embedded OCR			Scan Extension Kit(A)									
Banner Paper Tray			Banner Guide 10									
Numeric Key Pad			NK-7100									



#### Company details

\*KYOCERA does not warrant that any specifications mentioned will be error-free. Specifications are subject to change without notice. Information is correct at time of going to press. All other brand and product names may be registered trademarks or trademarks of their respective holders and are hereby acknowledged.

KYOCERA Business Partner